




# Whitney Lake Hunting Map

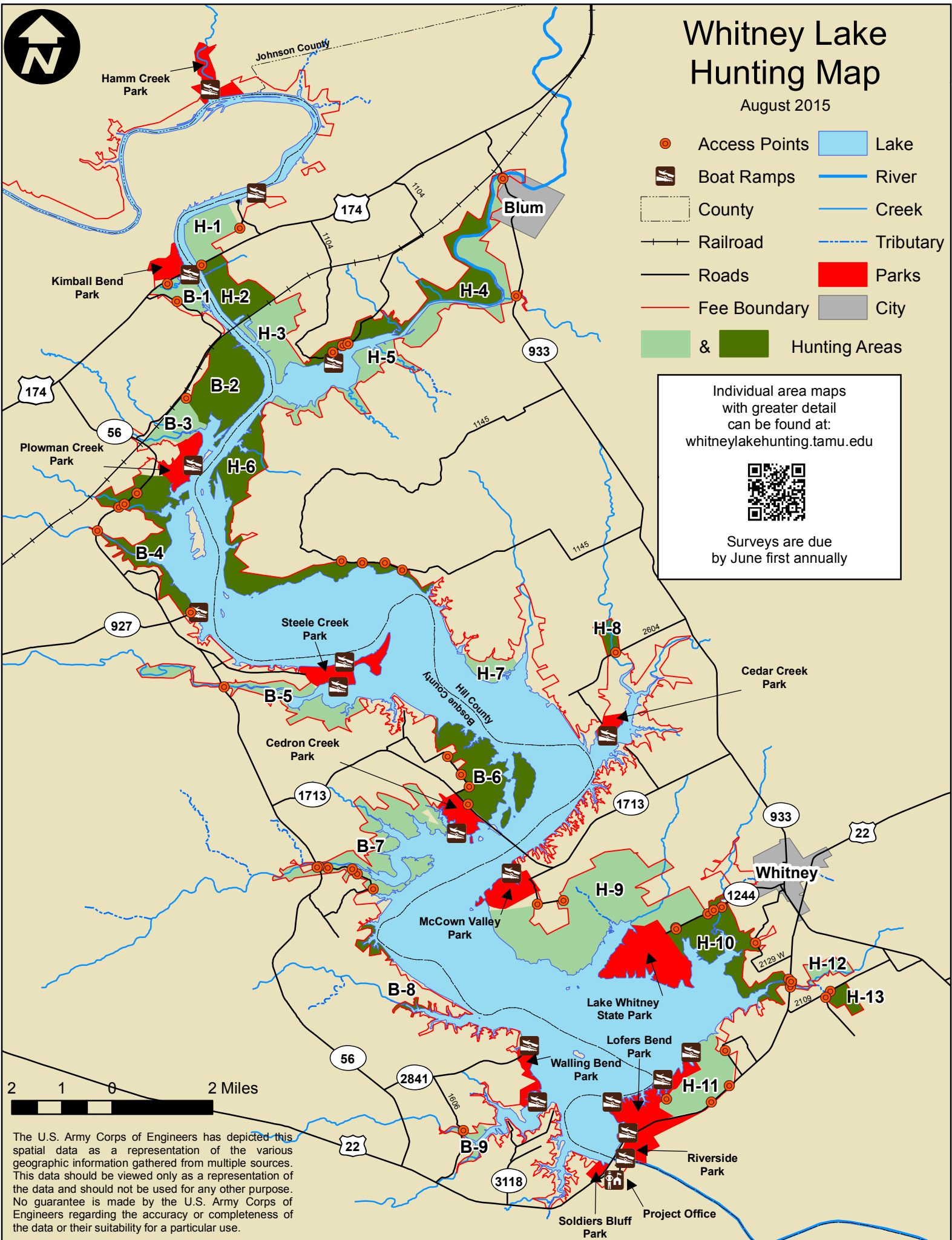
August 2015

- Access Points
- Boat Ramps
- County
- Railroad
- Roads
- Fee Boundary
- Lake
- River
- Creek
- Tributary
- Parks
- City
- & Hunting Areas

Individual area maps with greater detail can be found at: [whitneylakehunting.tamu.edu](http://whitneylakehunting.tamu.edu)



Surveys are due by June first annually



The U.S. Army Corps of Engineers has depicted this spatial data as a representation of the various geographic information gathered from multiple sources. This data should be viewed only as a representation of the data and should not be used for any other purpose. No guarantee is made by the U.S. Army Corps of Engineers regarding the accuracy or completeness of the data or their suitability for a particular use.